

2007 Income Limits for Affordable Units:

Household Size

Income Limit

1-4

\$56,950

Building	Pre-Sale Date	Move-in Date	Total # of Affordable Units	Total # of Affordable Units Sold
TWELVE at Centennial Park	Now	Now	104	46
Tribute Lofts	Now	Now	29	15
The Reynolds	Now	Now	26	17
Renaissance Walk at Sweet Auburn	Now	Now	32	2
Oakland Park	Now	Now	13	6

For more information, visit these websites:

www.twelvecentennialpark.com

www.reynoldsonpeachtree.com

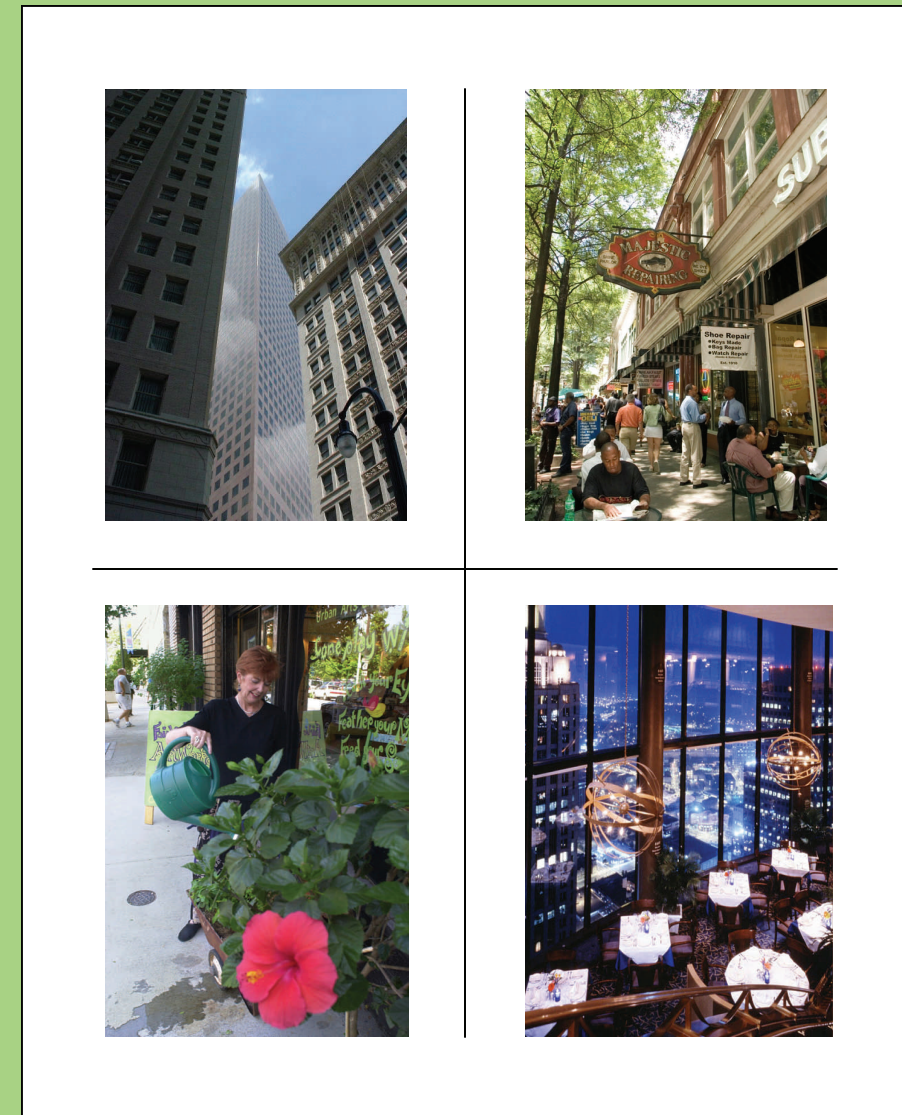
www.tributelofts.com

www.liveatsweetauburn.com

www.oaklandparkatlanta.com

www.atlantada.com

Or, call 404.614.8332



Downtown Affordable Housing

ADA



Atlanta Development Authority

2.25.08

Have you always wanted to live close to Downtown's great restaurants and attractions, but thought that it was too expensive for your budget?

Downtown is in the midst of a residential revival and all of the hottest new buildings have affordable units still available. One bedroom units in these properties are subsidized to **\$144,000** and two bedroom units to **\$155,000**.

TWELVE Centennial Park

The skyline is changing. The architecture is awesome. The vision is new Atlanta. TWELVE Centennial Park consists of twin 39-story residential towers which book-end a fabulous boutique hotel that complement exciting downtown living. Innovative. Interesting. Smart. Glass that reflects the sky, the city and the upfront urban attitude of the people who will call TWELVE Centennial Park their home. Be first.



The Reynolds



The Reynolds is an architecturally inspiring building offering a boutique condominium environment. Its traditional architecture provides a genuine alternative to other properties in the area, with fewer and larger units and a greater percentage of two-bedroom residences. Homes at The Reynolds are perfectly located within the in-town So-No district, south of North Avenue in Atlanta. Situated in the corner of Peachtree and Linden, The Reynolds offers access to countless restaurants, parks, shops and cultural attractions, within footsteps rather than miles.

Each of these properties are located in the area known as the Eastside Tax Allocation District

20 % of the units in projects receiving TAD funds must be affordable to buyers whose gross household income does not exceed 80% of the Atlanta metropolitan statistical area median income level.

Tribute Lofts



Coming Soon! Tribute Lofts located at the junction of Freedom Parkway and Boulevard, will offer true loft living in the heart of the city's historic Old Fourth Ward. Homeowners will enjoy high-design and high-quality homes all within an easy walk or bicycle ride to Inman Park, Virginia Highlands, Little Five Points, Midtown and Downtown.

Oakland Park

Oakland Park is conveniently located in the northern part of historic Grant Park and overlooks the Oakland Cemetery. Residents of Oakland Park can walk to the MLK MARTA station, Zoo Atlanta and numerous bars and restaurants. Best of all, residents enjoy unobstructed views of downtown.



Renaissance Walk at Sweet Auburn



Located on Auburn Avenue in a formerly-neglected portion of Atlanta's revered Martin Luther King, Jr. Historical District, Renaissance Walk will include 158 for-sale one and two-bedroom condominiums along with 27,000 square feet of new and restored retail development, and approximately 4,000 square feet of adaptive reuse historical interpretive museum space. The development will also restore several 1950s and 1960s era historical buildings and readapt them to modern uses.